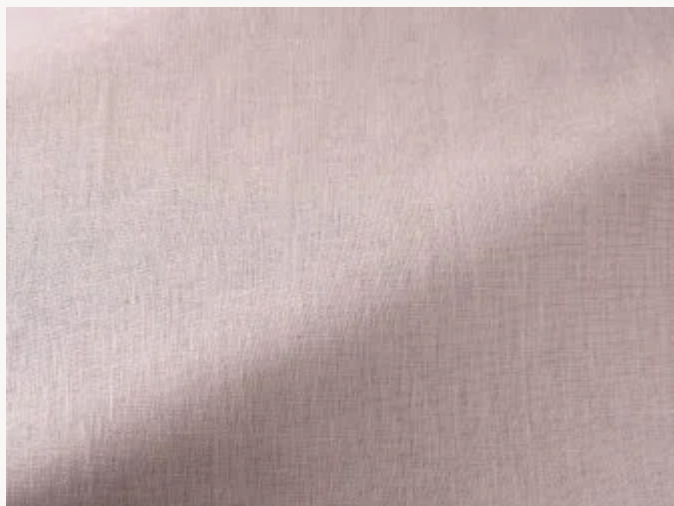


## F3444008 CABRIERES

Contemporaine par sa teinture unie stonewashed, cette magnifique toile de lin authentiquement chintzée n'a de traditionnel que son aspect délicatement glacé. Son tombé léger ainsi que ses teintes sorbets en font une sublime étoffe à draper, idéale pour rideaux. La beauté de son apprêt est sensible à l'eau et à la vapeur.

### F3444008 - Ballerine



Laize : 142,00 cm / 55,90 inch

### Pierre Frey

|                       |                     |
|-----------------------|---------------------|
| <b>TYPE</b>           | Unis                |
| <b>UTILISATION</b>    | Rideau              |
| <b>COMPOSITION</b>    | 100 % Lin           |
| <b>UNITÉ DE VENTE</b> | Disponible au mètre |
| <b>LAIZE</b>          | 142 cm / 55,90 inch |
| <b>POIDS</b>          | 349 gr / ml         |
| <b>ENTRETIEN</b>      |                     |

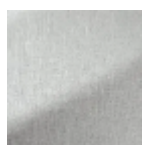
**NOTES** Finition chintz à l'aspect satiné

**LIASSE** F9979202006MINI

## 26 Couleurs



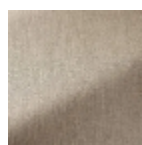
F3444001  
Blanc



F3444002  
Ivoire



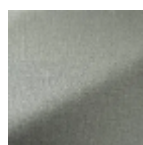
F3444003  
Naturel



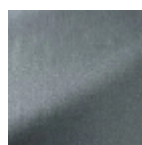
F3444004  
Lin



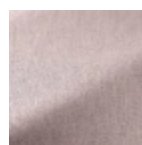
F3444005  
Ficelle



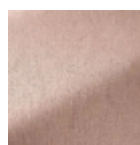
F3444006  
Galet



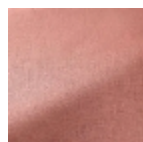
F3444007  
Zinc



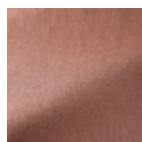
F3444008  
Ballerine



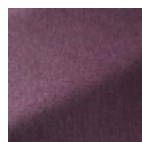
F3444009  
Poudre



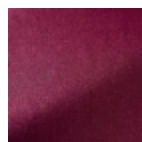
F3444010  
Peche



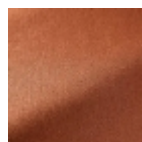
F3444011  
Vieux rose



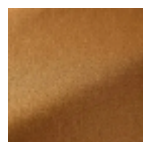
F3444012  
Cochenille



F3444013  
Rubellite



F3444014  
Sienne



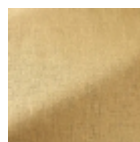
F3444015  
Cassonade



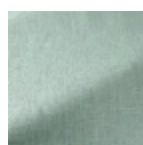
F3444016  
Saharienne



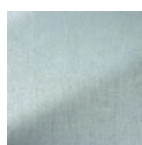
F3444017  
Ocre



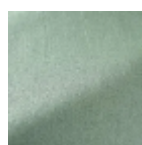
F3444018  
Creme brulee



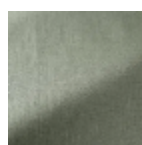
F3444019  
Celadon



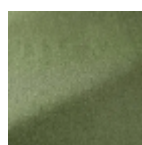
F3444020  
Aqua



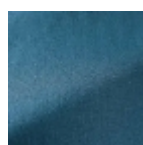
F3444021  
Verveine



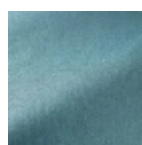
F3444022  
Argile



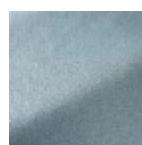
F3444023  
Lichen



F3444024  
Indigo



F3444025  
Orage



F3444026  
Glacier