



# F3754011 CHENILLE SAINT GERMAIN

Ce très bel uni chenille présente une texture reliefée et une main particulièrement douce. Il est principalement décliné dans des teintes douces et naturelles.

## F3754011 - Tempete



Laize : 139,00 cm / 54,72 inch

## Pierre Frey

<b>PERFORMANCE</b>	Martindale > 25 000 T
<b>TYPE</b>	Chenilles - Fibres douces - Unis
<b>UTILISATION</b>	Siège intensif
<b>MARTINDALE</b>	> 50.000 T
<b>COMPOSITION</b>	53 % Polyester - 37 % Coton - 10 % Viscose
<b>UNITÉ DE VENTE</b>	Disponible au mètre
<b>LAIZE</b>	139 cm / 54,72 inch
<b>POIDS</b>	931 gr / ml
<b>ENTRETIEN</b>	
<b>CERTIFICATIONS</b>	CAL TB 117- Pass BS5852 Cigarette test NFPA 260-Class 1
<b>INFORMATIONS</b>	Prévoir une confection adaptée pour renforcer les coutures
<b>LIASSE</b>	F9979212026 F9979212029MINI

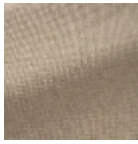
## 20 Couleurs



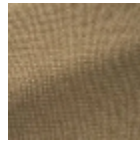
F3754001  
Neige



F3754002  
Mineral



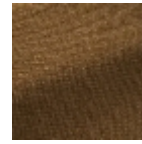
F3754003  
Sable



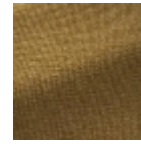
F3754004  
Ble



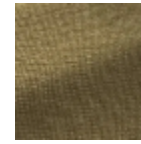
F3754005  
Bistre



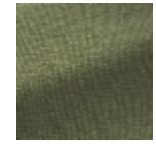
F3754006  
Mordore



F3754007  
Or



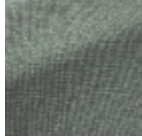
F3754008  
Muscat



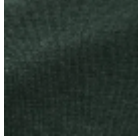
F3754009  
Mousse



F3754010  
Celadon



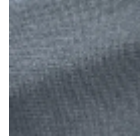
F3754011  
Tempete



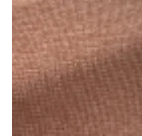
F3754012  
Malachite



F3754013  
Baltique



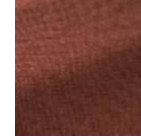
F3754014  
Bretagne



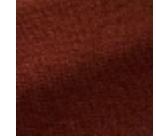
F3754015  
Celeste



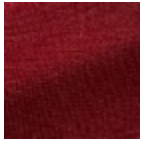
F3754016  
Tomette



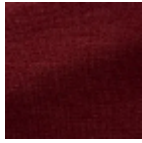
F3754017  
Grenadine



F3754018  
Brique



F3754019  
Groseille



F3754020  
Carmin