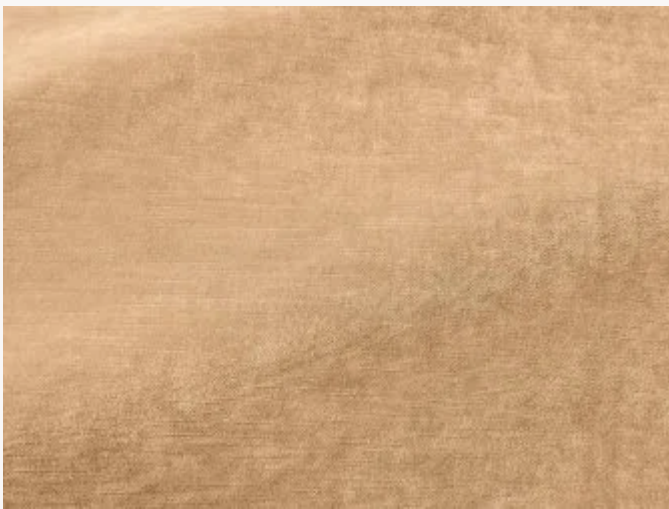


# F3793001 MURANO

Magnifique velours flammé non feu, MURANO est décliné dans une très belle gamme de couleurs élégantes et lumineuses.

## F3793001 - Sable



Laize : 140,00 cm / 55,11 inch

## Pierre Frey

<b>TYPE</b>	Unis - Velours
<b>UTILISATION</b>	Siège intensif
<b>MARTINDALE</b>	>100.000 T
<b>COMPOSITION</b>	100 % Polyester Trevira CS
<b>UNITÉ DE VENTE</b>	Disponible au mètre
<b>LAIZE</b>	140 cm / 55,11 inch
<b>POIDS</b>	630 gr / ml
<b>ENTRETIEN</b>	

<b>CERTIFICATIONS</b>	BS5582 Cigarette & match test en association avec une mousse difficilement inflammable BS5852 Cigarette test en association avec une mousse difficilement inflammable NFPA 701-Pass CAL TB 117- Pass BS5867 Curtain BS5852 Match test en association avec une mousse difficilement inflammable Non feu M1 CRIB 5 en association avec une mousse difficilement inflammable EN1021-1-2 CLASSE UNO NFPA 260-Class 1
-----------------------	--

<b>NOTES</b>	Embossed fabrics
--------------	------------------

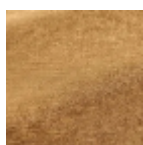
<b>INFORMATIONS</b>	Se patine à l'usage
---------------------	---------------------

<b>LIASSE</b>	F9979212034MINI F9979212033
---------------	--------------------------------

## 29 Couleurs



F3793001  
Sable



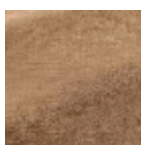
F3793002  
Sahara



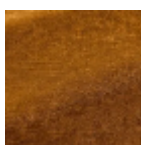
F3793003  
Foin



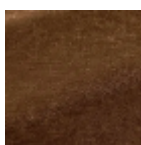
F3793004  
Galet



F3793005  
Dune



F3793006  
Alezan



F3793007  
Chataigne



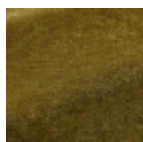
F3793008  
Gold



F3793009  
Bouton d'or



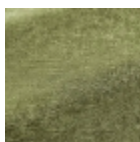
F3793010  
Pistache



F3793011  
Mousse



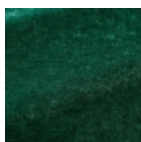
F3793012  
Muscat



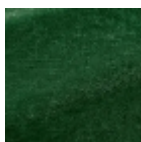
F3793013  
Veronese



F3793014  
Sinople



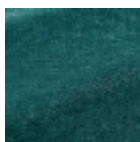
F3793015  
Malachite



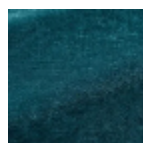
F3793016  
Sapin



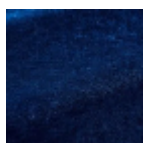
F3793017  
Civre



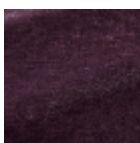
F3793018  
Canard



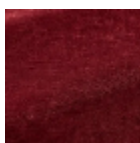
F3793019  
Prusse



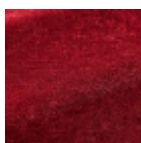
F3793020  
Bleu roi



F3793021  
Cassis



F3793022  
Rubis



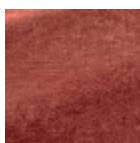
F3793023  
Vermeil



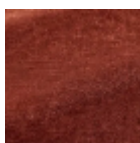
F3793024  
Groseille



F3793025  
Peche



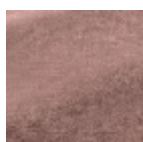
F3793026  
Vieux rose



F3793027  
Tomette



F3793028  
Lilas



F3793029  
Houquette