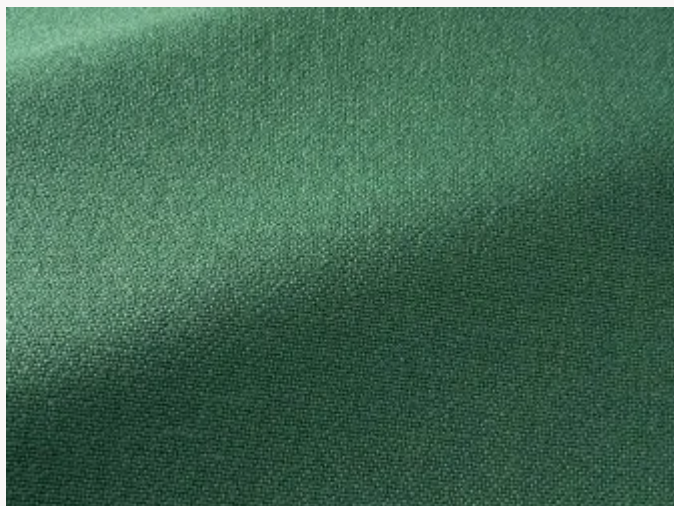


# F3935019 GASSIN

Magnifique natté de lin, GASSIN apporte raffinement et élégance grâce à son tombé lourd et sa main particulièrement épaisse et douce. Il se décline dans une large gamme de couleurs harmonieuses et joyeuses. A la fois contemporain et intemporel, ce très beau lin permet une utilisation en rideaux et en siège.

## F3935019 - Menthe



Laize : 140,00 cm / 55,11 inch

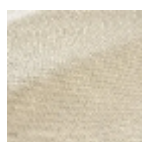
## Pierre Frey

<b>PERFORMANCE</b>	Martindale > 25 000 T
<b>TYPE</b>	Jacquards - Unis
<b>UTILISATION</b>	Siège intensif
<b>MARTINDALE</b>	100.000 T
<b>COMPOSITION</b>	72 % Lin - 19 % Coton - 8 % Polyamide - 1 % Acrylique
<b>UNITÉ DE VENTE</b>	Disponible au mètre
<b>LAIZE</b>	140 cm / 55,11 inch
<b>POIDS</b>	1015 gr / ml
<b>ENTRETIEN</b>	    
<b>CERTIFICATIONS</b>	BS5852 Cigarette & match test BS5852 Match test BS5852 Cigarette test NFPA 260-Class 1 EN1021-1-2 en association avec une mousse difficilement inflammable
<b>LIASSE</b>	F9979202410

## 29 Couleurs



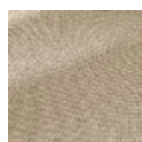
F3935001  
Coton



F3935002  
Nuage



F3935003  
Crème



F3935004  
Lin



F3935005  
Beige



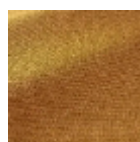
F3935006  
Dune



F3935007  
Chanvre



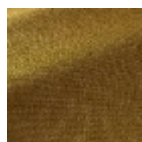
F3935008  
Cannelle



F3935009  
Ocre



F3935010  
Camel



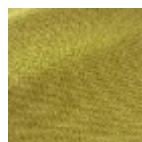
F3935011  
Mordoré



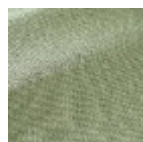
F3935012  
Miel



F3935013  
Citron



F3935014  
Absinthe



F3935015  
Sauge



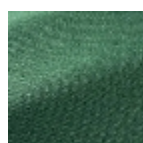
F3935016  
Céladon



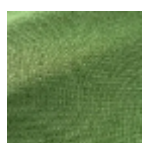
F3935017  
Amande



F3935018  
Forêt



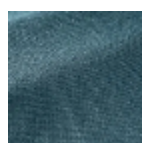
F3935019  
Menthe



F3935020  
Jade



F3935021  
Olive



F3935022  
Azur



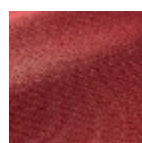
F3935023  
Glacier



F3935024  
Givre



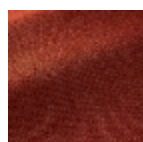
F3935025  
Rose



F3935026  
Bougainvillier



F3935027  
Corail



F3935028  
Tangerine



F3935029  
Ambre