



# F3936005 SAINT BRIAC






Intemporel et moderne à la fois, ce magnifique uni à l'aspect laineux et à la main souple et épaisse se décline dans une très belle gamme de couleurs aux tonalités lumineuses et profondes.

## F3936005 - CHANVRE

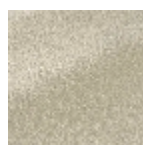


Laize : 145,00 cm / 57,08 inch

## Pierre Frey

PERFORMANCE	Martindale > 25 000 T
TYPE	Bouclettes - Fibres douces - Unis
UTILISATION	Siège intensif
MARTINDALE	90.000 T
COMPOSITION	40 % Acrylique - 30 % Viscose - 20 % Laine - 10 % Polyester
UNITÉ DE VENTE	Disponible au mètre
LAIZE	145 cm / 57,08 inch
POIDS	1254 gr / ml
ENTRETIEN	    
CERTIFICATIONS	BS5852 Cigarette & match test CAL TB 117- Pass BS5852 Match test BS5852 Cigarette test NFPA 260-Class 1 EN1021-1-2 en association avec une mousse difficilement inflammable
LIASSE	F9979202506 F9979202506MINI

## 22 Couleurs



F3936001  
COTON



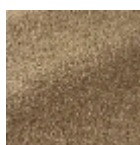
F3936002  
CRÈME



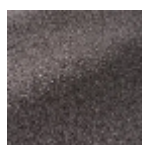
F3936003  
BEIGE



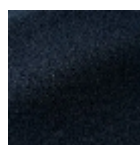
F3936004  
LIN



F3936005  
CHANVRE



F3936006  
TAUPE



F3936007  
NAVY



F3936008  
PRUSSE



F3936009  
BLEUET



F3936010  
LAGON



F3936011  
CÉLADON



F3936012  
MENTHOL



F3936013  
MOUSSE



F3936014  
LICHEN



F3936015  
PISTACHE



F3936016  
OLIVE



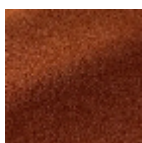
F3936017  
MIEL



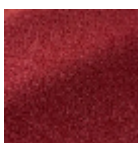
F3936018  
OCRE



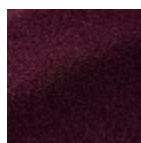
F3936019  
HAVANE



F3936020  
AMBRE



F3936021  
GRENAT



F3936022  
AUBERGINE