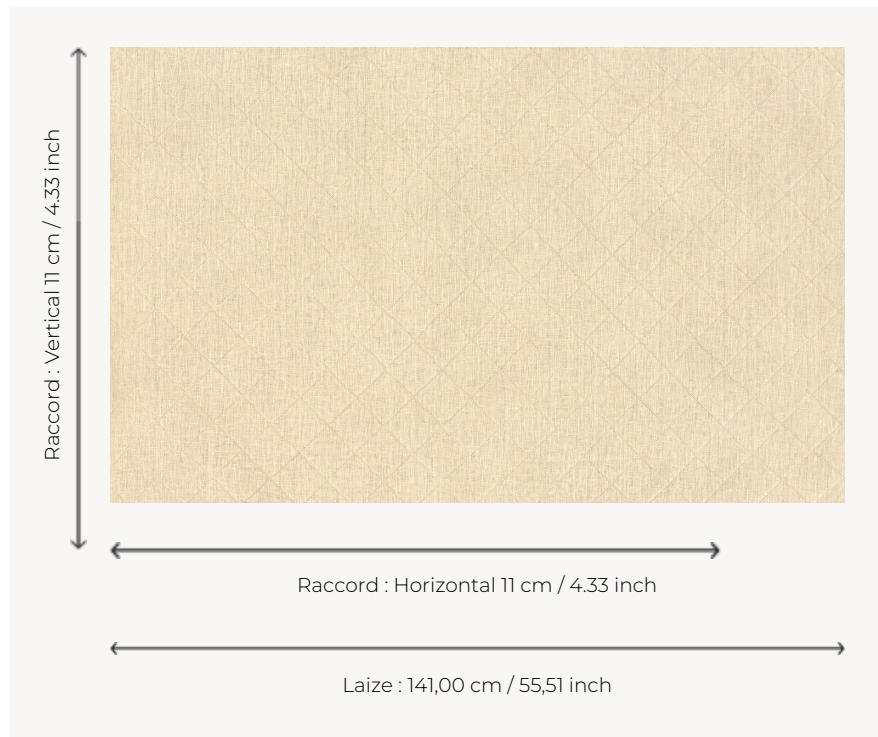


F4054002 FÉROÉ

FÉROÉ est un charmant lin piqué d'un motif losanges dans l'esprit des courtepointes traditionnelles.

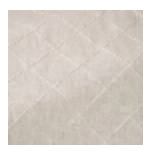
F4054002 - VANILLE



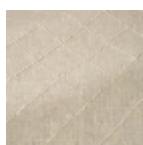
Pierre Frey

TYPE	Broderies - Unis
COMPOSITION	99 % Lin - 1 % Polyester
UNITÉ DE VENTE	Disponible au mètre
LAIZE	141 cm / 55,51 inch
RACCORD	H: 11 cm - 4,33 inch V: 11 cm - 4,33 inch Raccord droit
POIDS	331 gr / ml
ENTRETIEN	

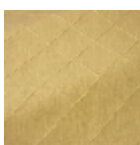
7 Couleurs



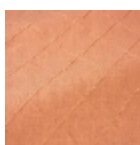
F4054001
CRAIE



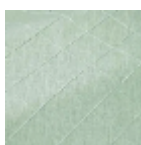
F4054002
VANILLE



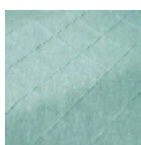
F4054003
MIEL



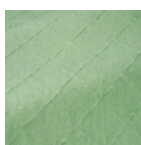
F4054004
BLUSH



F4054005
AQUA



F4054006
CIEL



F4054007
CELADON