

I6576010 LUIGI

Très beau velours Trevira CS évoquant la douceur et l'élégance d'un velours de soie.

I6576010 - Lune



Laize : 140,00 cm / 55,11 inch

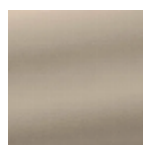
Fadini Borghi

TYPE	-
UTILISATION	Siège intensif
MARTINDALE	>100.000 T
COMPOSITION	100 % Polyester Trevira CS
UNITÉ DE VENTE	Disponible au mètre
LAIZE	140 cm / 55,11 inch
POIDS	967 gr / ml
ENTRETIEN	

CERTIFICATIONS	BS5852 Cigarette & match test CAL TB 117- Pass Non feu M1 CLASSE UNO NFPA 260-Class 1
-----------------------	---

NOTES	Non feu Embossed fabrics
--------------	-----------------------------

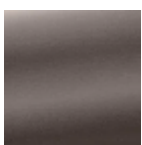
14 Couleurs



I6576001
Quartz



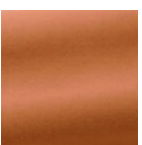
I6576002
Galet



I6576003
Mika



I6576004
Absinthe



I6576005
Mangue



I6576008
Poudre



I6576010
Lune



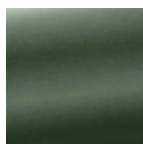
I6576011
Canard



I6576012
Céladon



I6576013
Fontaine



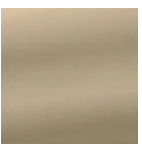
I6576014
Forêt



I6576015
Gris



I6576016
Zan



I6576017
Nacre