

I6585001 ELVIDA

Uni en soie et lin à l'aspect craquelé pour un effet chic et contemporain.

I6585001 - Crystal

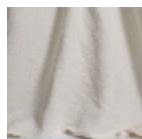


Laize : 138,00 cm / 54,33 inch

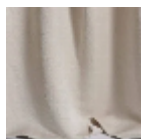
Fadini Borghi

TYPE	-
COMPOSITION	50 % Viscose - 30 % Lin - 20 % Soie
UNITÉ DE VENTE	Disponible au mètre
LAIZE	138 cm / 54,33 inch
POIDS	483 gr / ml
ENTRETIEN	
INFORMATIONS	Finition artisanale pour un aspect volontairement froissé

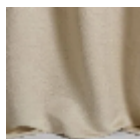
4 Couleurs



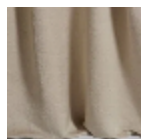
I6585001
Crystal



I6585002
Nacre



I6585003
Dune



I6585004
Sable