

# I6601001 TILDA

Faux-uni aux multiples reliefs évoquant la roche brute.

## I6601001 - Silver



Laize : 134,00 cm / 52,75 inch

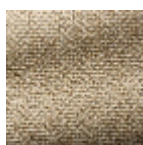
## Fadini Borghi

|                       |  |
|-----------------------|--|
| <b>PERFORMANCE</b>    | haute résistance   |
| <b>TYPE</b>           | -  |
| <b>UTILISATION</b>    | Siège normal   |
| <b>MARTINDALE</b>     | 40.000 T   |
| <b>COMPOSITION</b>    | 52 % Viscose - 27 % Polyester - 15 % Coton - 6 % Lin                                       |
| <b>UNITÉ DE VENTE</b> | Disponible au mètre  |
| <b>LAIZE</b>          | 134 cm / 52,75 inch  |
| <b>RACCORD</b>        | Raccord libre  |
| <b>POIDS</b>          | 884 gr / ml  |
| <b>ENTRETIEN</b>      |  |
| <b>CERTIFICATIONS</b> | BS5852 Cigarette & match test<br>NFPA 260-Class 1  |
| <b>NOTES</b>          | Tissé dans les ateliers Pierre Frey du nord de la France. Entreprise du Patrimoine Vivant. |
| <b>INFORMATIONS</b>   | Tissage irrégulier   |

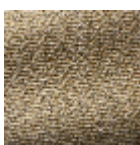
## 8 Couleurs



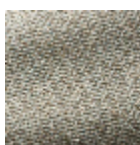
I6601001  
Silver



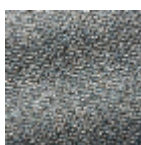
I6601002  
Gold



I6601003  
Mordoré



I6601004  
Opaline



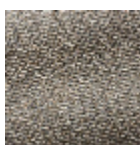
I6601005  
Saphir



I6601006  
Emeraude



I6601007  
Nymphe



I6601009  
Graphite