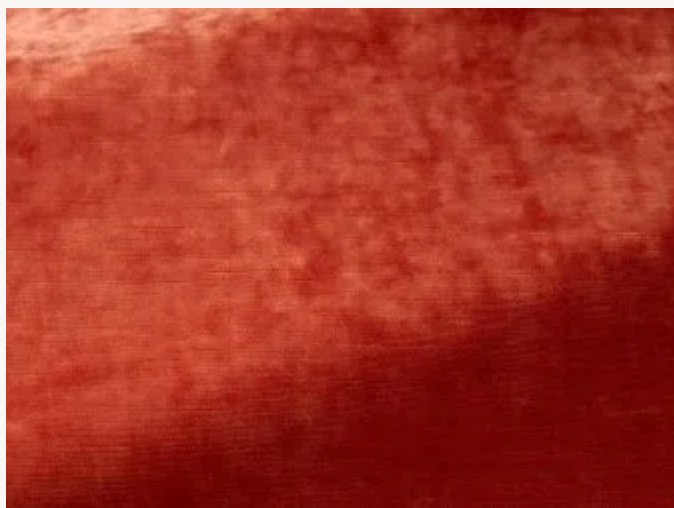


I6615012 CAPRI II

Superbe velours non feu à l'effet frappé, CAPRI II est décliné dans une très belle gamme de couleurs chaleureuses.

I6615012 - Albicocca



Laize : 141,00 cm / 55,51 inch

Fadini Borghi

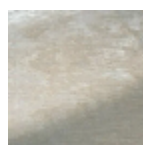
TYPE	Unis - Velours
UTILISATION	Siège intensif
MARTINDALE	>100.000 T
COMPOSITION	100 % Polyester Trevira CS
UNITÉ DE VENTE	Disponible au mètre
LAIZE	141 cm / 55,51 inch
POIDS	634 gr / ml
ENTRETIEN	

CERTIFICATIONS	NFPA 701-Pass BS5852 Cigarette & match test CAL TB 117- Pass BS5867 Curtain BS5852 Match test Non feu M1 BS5852 Cigarette test EN1021-1-2 CLASSE UNO NFPA 260-Class 1 CRIB 5
-----------------------	--

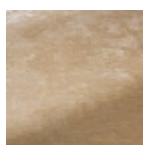
NOTES	Non feu Embossed fabrics
--------------	-----------------------------

LIASSE	I9979202001MINI I9979202001
---------------	--------------------------------

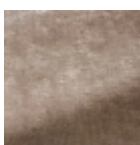
26 Couleurs



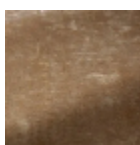
16615001
Neve



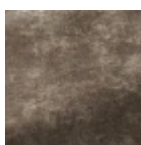
16615002
Perla



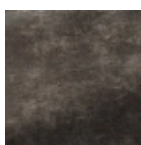
16615003
Tortora



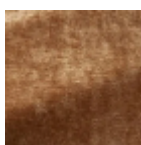
16615004
Pepe



16615005
Delfino



16615006
Tempesta



16615007
Cappuccino



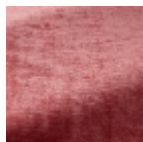
16615008
Avana



16615009
Senape



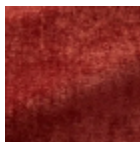
16615010
Pesca



16615011
Rosa



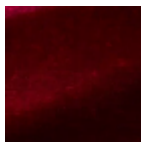
16615012
Albicocca



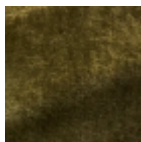
16615013
Granata



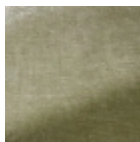
16615014
Ciliegia



16615015
Lampone



16615016
Felce



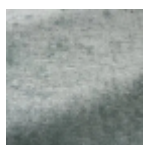
16615017
Giada



16615018
Oliva



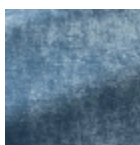
16615019
Smeraldo



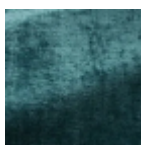
16615020
Celadon



16615021
Fontana



16615022
Nattier



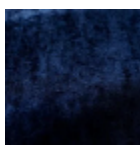
16615023
Anatra



16615024
Zaffiro



16615025
Marinaio



16615026
Indaco