

# O7939019 SHERLOCK

Séduisante étoffe réversible influencée par les tissus de costumes masculins, cet uni se décline dans une palette de couleurs qui va du classique au contemporain.

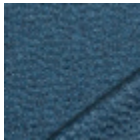
## O7939019 - Alpaga



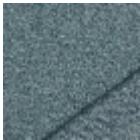
## Boussac

<b>PERFORMANCE</b>	Martindale > 25 000 T
<b>TYPE</b>	Fibres douces - Unis
<b>UTILISATION</b>	Siège intensif
<b>MARTINDALE</b>	60.000 T
<b>COMPOSITION</b>	100 % Polyester
<b>UNITÉ DE VENTE</b>	Disponible au mètre
<b>LAIZE</b>	138 cm / 54,33 inch
<b>RACCORD</b>	H: 1 cm - 0,39 inch V: 2 cm - 0,78 inch
<b>POIDS</b>	360 gr / ml
<b>ENTRETIEN</b>	
<b>CERTIFICATIONS</b>	CRIB 5 en association avec une mousse difficilement inflammable BS5852 Cigarette test NFPA 260-Class 1 EN1021-1-2 en association avec une mousse difficilement inflammable
<b>NOTES</b>	Reversible Embossed fabrics

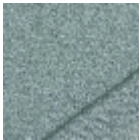
14 Couleurs



O7939001  
Grand large



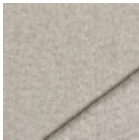
O7939002  
Usine



O7939003  
Mistral



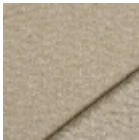
O7939004  
Sel



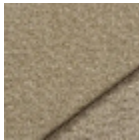
O7939005  
Levure



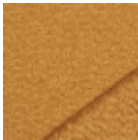
O7939006  
Ficelle



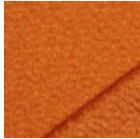
O7939007  
Jute



O7939008  
Acacia



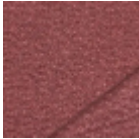
O7939010  
Mangue



O7939011  
Courge



O7939012  
Matador



O7939014  
Tomette



O7939019  
Alpaga



O7939023  
Tableau