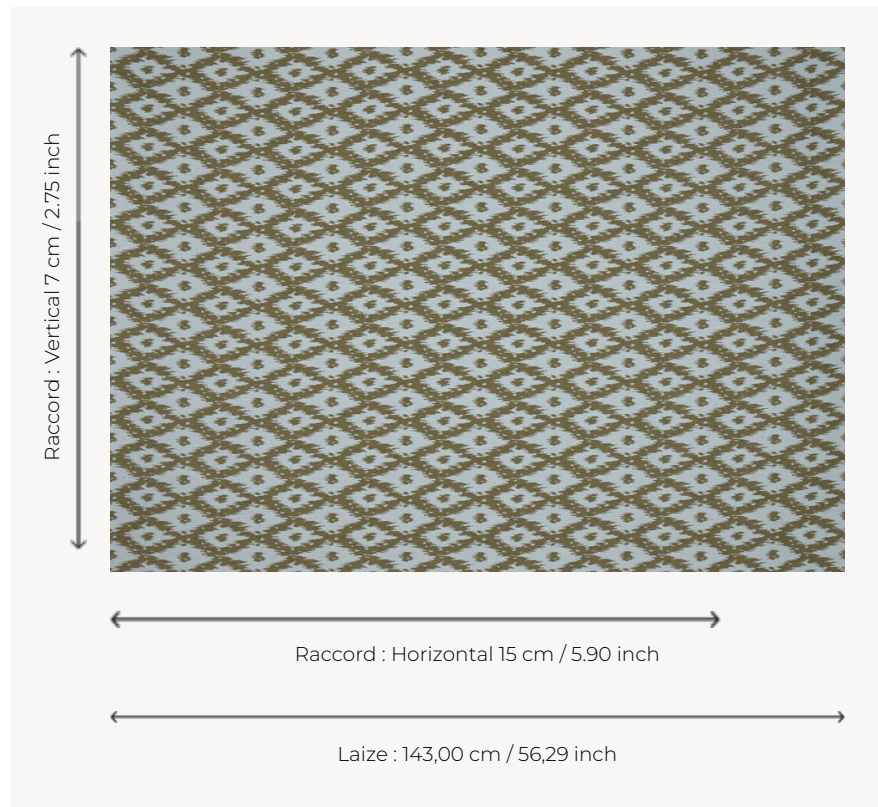


T0734002 MAJORCA

MAJORCA présente un motif d'ikat aux losanges irréguliers évoquant les plus beaux caftans ouzbeks.

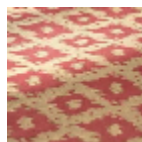
T0734002 - Aqua



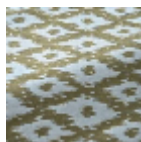
Thorp of London

TYPE	Jacquards
TECHNIQUE	Tissé Jacquard
UNITÉ DE VENTE	Disponible au mètre
COMPOSITION	83 % Coton - 17 % Polyester
CHAÎNE	TW006 White polyester
NBR DE FILS DE TRAME	2
TRAME	A - CCY AQUA B - CCY CACTUS
LAIZE UTILE	143 cm / 56,29 inch
RACCORD	H: 15 cm - 5,90 inch V: 7 cm - 2,75 inch Raccord droit
POIDS	47 gr / ml
ENTRETIEN	
NOTES	Reversible

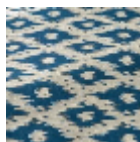
3 Couleurs



T0734001
New tomato



T0734002
Aqua



T0734003
Azure