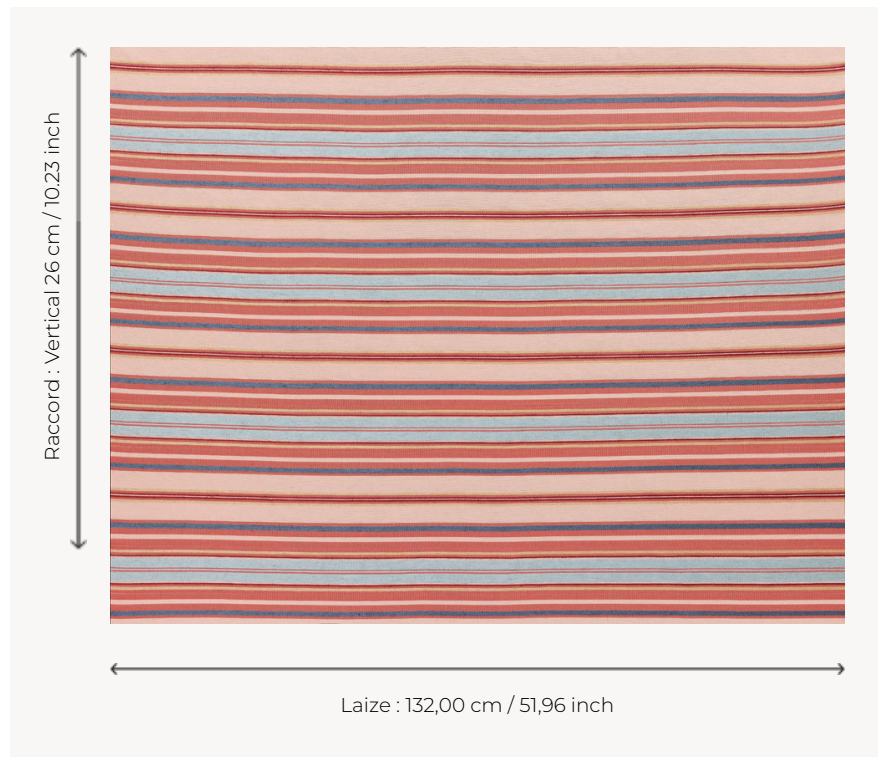


## T0759002 JUSTINE STRIPE

Cette belle rayure horizontale intemporelle est principalement composée de coton.

### T0759002 - Carnation

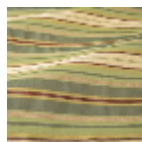


### Thorp of London

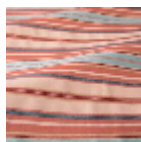
<b>TYPE</b>	Jacquards
<b>TECHNIQUE</b>	Tissé Jacquard
<b>UNITÉ DE VENTE</b>	Disponible au mètre
<b>COMPOSITION</b>	76 % Coton - 17 % Viscose - 7 % Lin
<b>CHAÎNE</b>	TW003 Beige cotton
<b>NBR DE FILS DE TRAME</b>	6
<b>TRAME</b>	A - CCY CARNATION B - FFY CORSICAN C - FFY PERRIWINKLE D - FFY GRANARY E - FFY WINE F - CCY NEW TOMATO
<b>LAIZE UTILE</b>	132 cm / 51,96 inch
<b>RACCORD</b>	V: 26 cm - 10,23 inch Raccord libre
<b>POIDS</b>	40 gr / ml
<b>ENTRETIEN</b>	

**INFORMATIONS** Irrégularité naturelle de la fibre  
Rayures perpendiculaires aux lisières

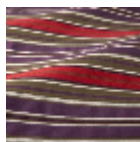
## 3 Couleurs



T0759001  
Pine



T0759002  
Carnation



T0759003  
Grape