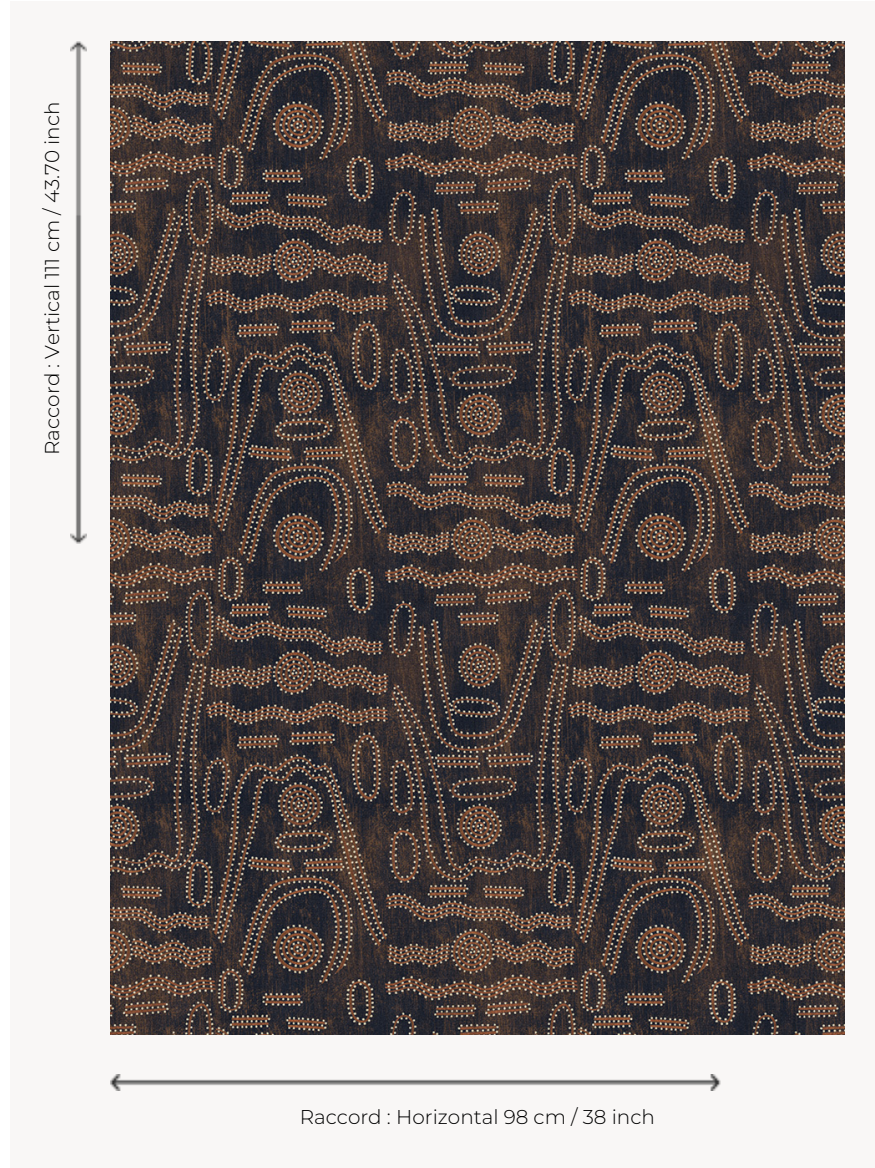


# FT300001 TASMANIA

Printed on cut pile, TASMANIA is made with dots and undulating lines in tribute to the diverse patterns used in Aboriginal art.

## FT300001 - Ebène



## Pierre Frey

<b>PERFORMANCE</b>	TRAFFIC INTENSE - NON FEU
<b>FAMILY</b>	Carpets Rug
<b>TECHNIQUE</b>	Printed tuft
<b>USE</b>	Intensive traffic Stairs
<b>COMPOSITION</b>	100 % Polyamide
<b>DENSITY</b>	19815 Points/Sq.ft
<b>PILE</b>	Cut pile
<b>ASPECT</b>	Mat
<b>REPEAT</b>	H: 98 cm - 38,00 inch V: 111 cm - 43,70 inch Straight repeat
<b>NUMBER OF COLORS</b>	-
<b>PILE HEIGHT</b>	6.00 mm 0.24 inch
<b>TOTAL HEIGHT</b>	7.00 mm 0.27 inch
<b>TOTAL WEIGHT</b>	6.62 oz/ft <sup>2</sup>
<b>CERTIFICATIONS</b>	Passé
<b>NOTES</b>	Fire retardant Heavy traffic Large width
<b>INFORMATION</b>	Production tolerance +/- 3 to 5%

1 Colors



FT300001

Ebène