

## FT446001 CASCADE

This geometric pattern is inspired by the art of basketry. It comes in two color variants: naturals and blues, both of which highlight the vibrancy of the design.

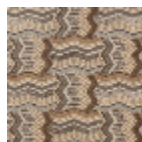
### FT446001 - NATUREL



### Pierre Frey

<b>PERFORMANCE</b>	TRAFIC INTENSE - NON FEU
<b>FAMILY</b>	Carpet
<b>TECHNIQUE</b>	Fast-Track woven Axminster
<b>USE</b>	Intensive traffic Stairs
<b>COMPOSITION</b>	80 % Wool - 20 % Polyamide
<b>DENSITY</b>	7x10
<b>PILE</b>	Cut pile
<b>ASPECT</b>	Mat
<b>REPEAT</b>	H: 67 cm - 26,00 inch V: 24 cm - 9,44 inch Straight repeat
<b>NUMBER OF COLORS</b>	6
<b>PILE HEIGHT</b>	7.40 mm 0.29 inch
<b>TOTAL HEIGHT</b>	10.10 mm 0.39 inch
<b>TOTAL WEIGHT</b>	7.18 oz/ft²
<b>NOTES</b>	Fire retardant Heavy traffic Large width
<b>INFORMATION</b>	Production tolerance +/- 3 to 5% Natural irregularities Natural peeling

## 2 Colors



FT446001  
NATUREL



FT446002  
SOURIS