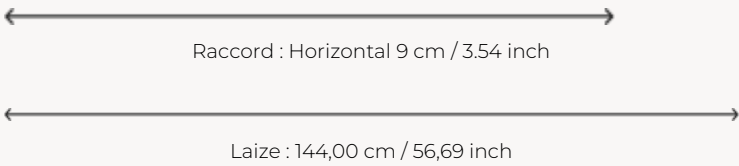




F3825005 ERCOLE

High-performance In-Outdoor fabric, ERCOLE is composed of two overlapping stripes, one of which is created using a raffia-like weft thread. A fabric that expresses the character and charm of sunny countries, it is woven in Pierre Frey's EPV-certified workshops in the north of France, experts in Europe in the weaving of lightfast, stain-resistant textiles.

F3825005 - Orange



Pierre Frey

| | |
|----------------|---|
| PERFORMANCE | Outdoor |
| TYPE | Jacquards |
| USE | Normal use |
| MARTINDALE | < 20.000 T |
| COMPOSITION | 100 % Acrylic |
| SALES UNIT | Available per meter/yard |
| WIDTH | 144 cm / 56,69 inch |
| REPEAT | H: 9 cm - 3,54 inch |
| WEIGHT | 511 gr / ml |
| CARE |      |
| CERTIFICATIONS | NFPA 260-Class 1 CAL TB 117- Pass |
| NOTES | High lightfastness, mold-resistant, stain & water repellent Washable fabric Made in France (EPV Living Heritage Mill) Indoor-Outdoor fabric Woven in Pierre Frey's workshop in northern France.Living Heritage Mill. |
| INFORMATION | Stripes parallel to selvages Reinforced stitching recommended to avoid fraying at seams For outdoor use, make sure to use appropriate lining materials. Remember to store pads and cushions in a clean, dry place when not in use. |
| BOOK | F9979202305 |

6 Colors



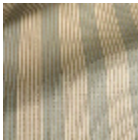
F3825001
Beige



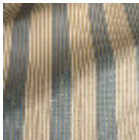
F3825002
Soleil



F3825003
Corail



F3825004
Celadon



F3825005
Orage



F3825006
Marine