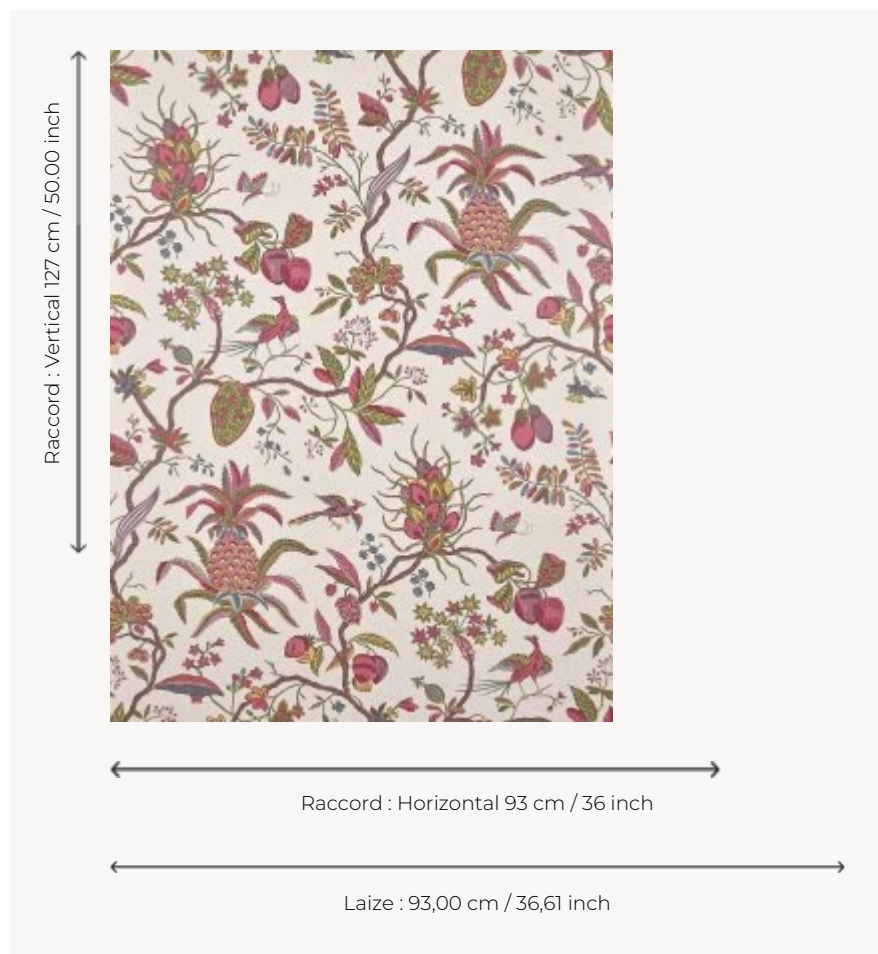


BP372001 PETITS APPARTEMENTS DE LA REINE

This superb drawing with a large motif of flowering branches and pineapple reproduces a printed canvas called "l'Ananas", kept in the Musée de la Toile de Jouy. Originally printed with the block printing technique around 1777 by the Manufacture Royale d'Oberkampf, this pattern was used for furniture. Its coordinated fabric was chosen for the renovation of the small apartments of the Queen at the Palace of Versailles.

BP372001 - Jouy



Braquenié

TYPE Wide width printed wallpapers

COLLABORATION Musée de la Toile de Jouy

SALES UNIT Available per meter/yard

BACKING NON WOVEN

COMPOSITION -

WIDTH 93 cm / 36.61 inch

REPEAT H: 93 cm - 36.00 inch
V: 127 cm - 50.00 inch
Straight repeat

WEIGHT 185 gr / m²

CARE 

TRIMMING Pretrimmed

HANGING/REMOVING Paste the wall
Strippable

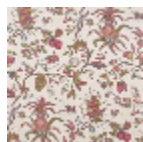
CERTIFICATIONS EUROCLASS B-s1,d0
ASTM E84 Class A

NOTES Good lightfastness
Flame retardant backing

INFORMATION Use the trim & join marks during installation. Double-cut installation.

BOOK B9979PPBRAQ9

1 Colors



BP372001

Jouy